

FIG. 31-31 ROLLER ASSEMBLY, Qty 4

ITEM NO.	PART NUMBER	QTY.
1	rollerBottomPlate	1
2	rollerMiddlePlate	1
3	rollerBody	1
4	rollerDowel	2
5	5972K501	4
6	SCREW 4-40FH x .25	2

BOM NOT FOR PUBLICATION

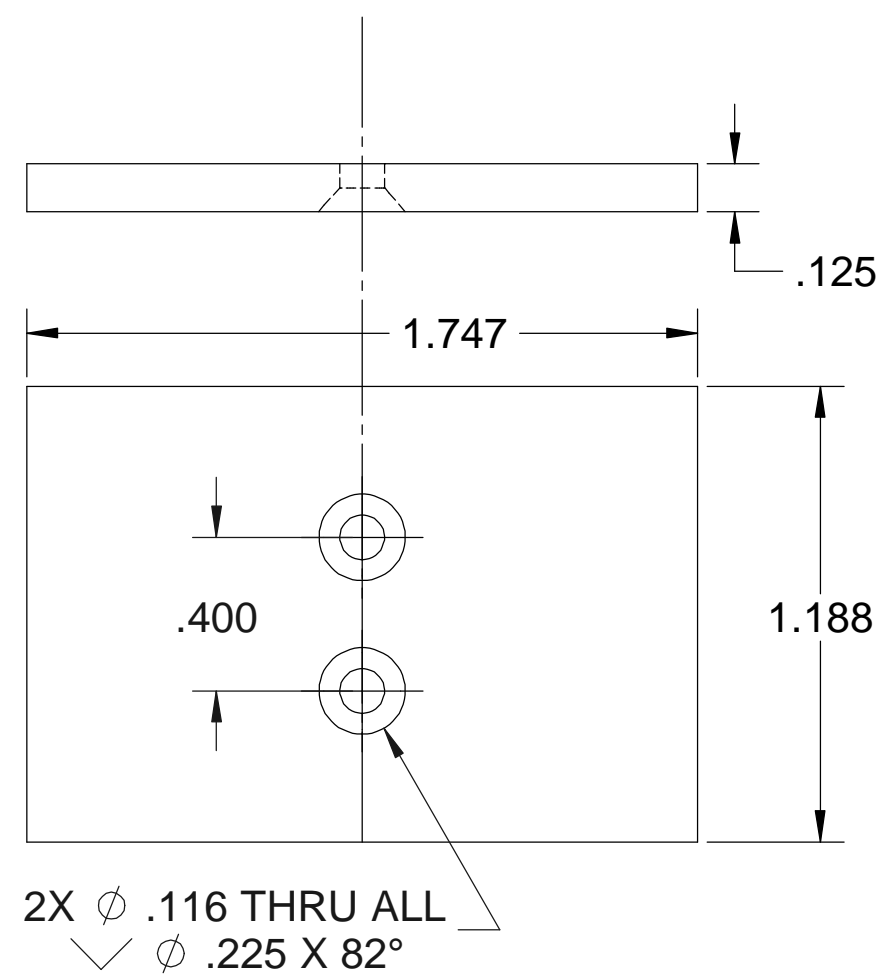


FIG. 31-32 ROLLER BOTTOM PLATE
Brass, Qty 4

1

SIZE c	DWG. NO. rollerAssembly		
Ed Hume	SCALE: 2:1	11/15/2016 10:08:11 AM	SHEET 2 OF 5

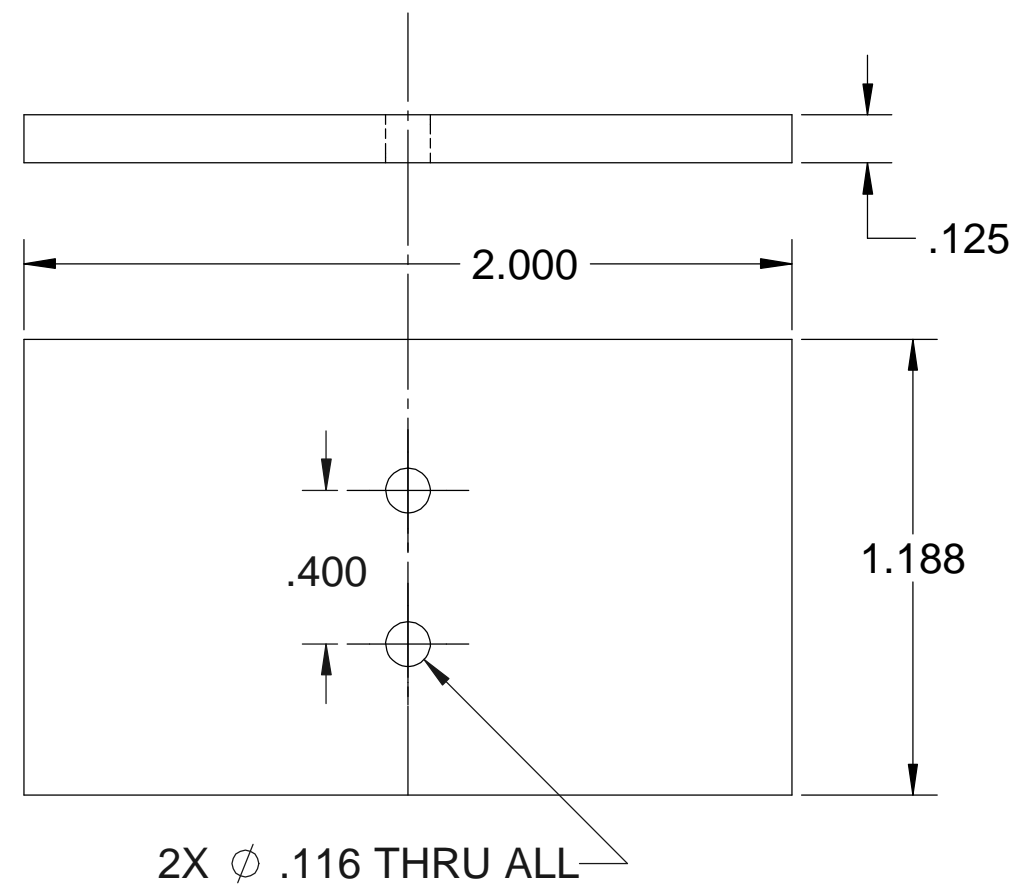


FIG. 31-33 ROLLER MIDDLE PLATE
Brass, Qty 4

2

SIZE c	DWG. NO. rollerAssembly		
Ed Hume	SCALE: 2:1	11/15/2016 10:12:59 AM	SHEET 3 OF 5

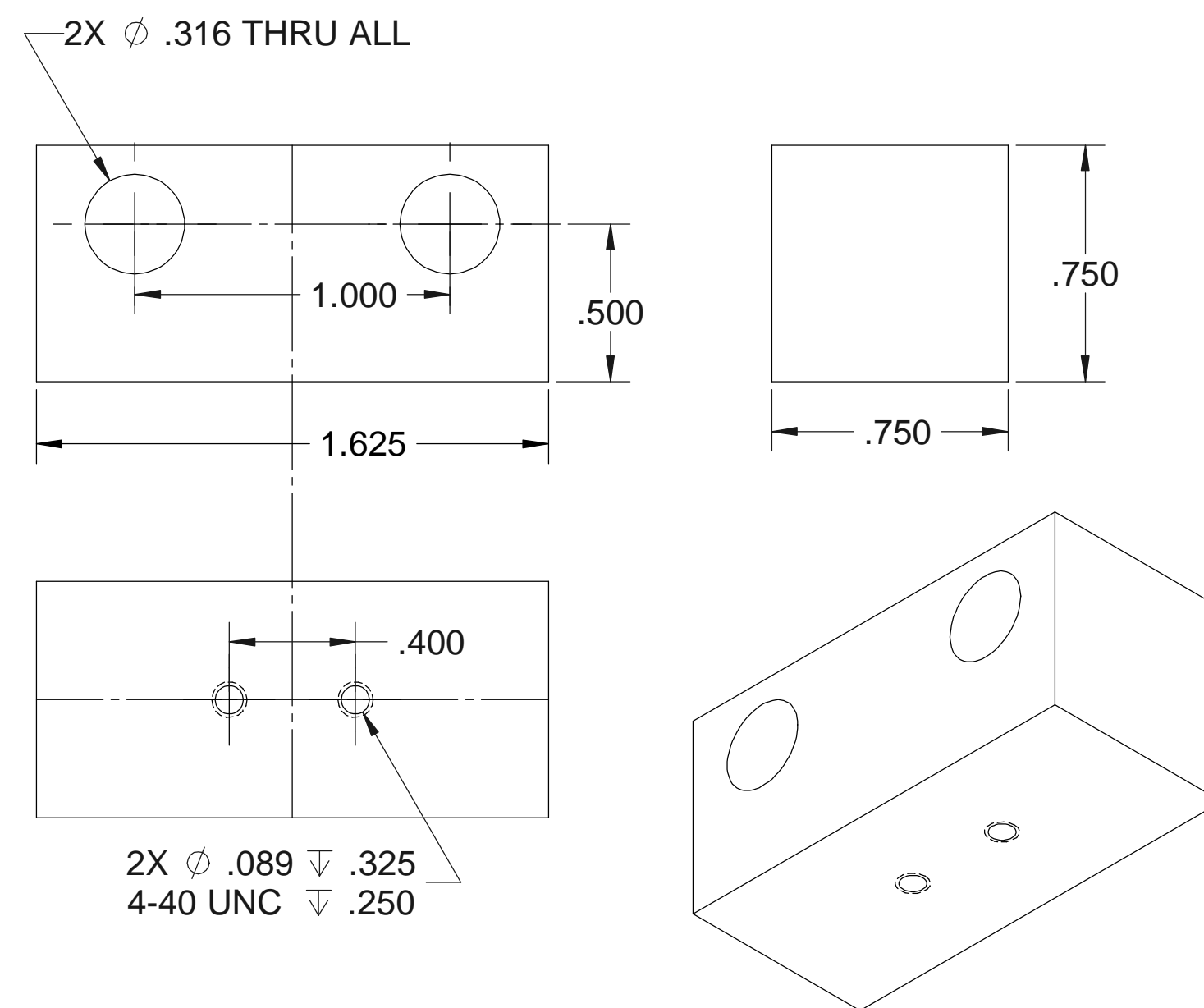


FIG. 31-34 ROLLER BODY
Brass, Qty 4

3

SIZE c	DWG. NO. rollerAssembly		
Ed Hume	SCALE: 2:1	11/15/2016 10:21:21 AM	SHEET 4 OF 5

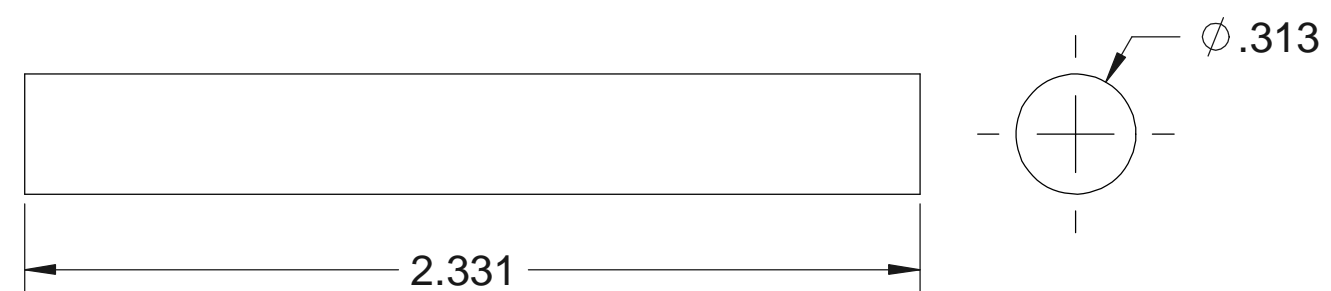


FIG. 31-35 ROLLER DOWEL
Brass, Qty 8

4

Ed Hume	SIZE	DWG. NO.		
	c	rollerAssembly		
		SCALE: 2:1	11/15/2016 10:14:41 AM	SHEET 5 OF 5